


[Home](#)
[Download](#) | [Exchange Server](#) | [Feedback](#) | [Index](#) | [ISA-Server](#) | [Jokes](#) | [Terms of Service/Usage Policy](#) | [Windows Security](#) | [What's New](#) | [White Papers](#)

### Networking Topics

[Windows XP Prof](#)  
[Windows XP Home](#)  
[Windows 2000 Server](#)  
[Windows 2000 Prof](#)  
[Windows NT4 Server](#)  
[Windows NT4 Work.](#)  
[Windows ME](#)  
[Windows 98](#)  
[Windows 95](#)  
[Windows 3.x](#)  
[MS-DOS](#)

[Step-By-Step](#)  
[Network Basics](#)  
[Trouble Shooting](#)

[Exchange Server](#)  
[e-Mail Security](#)  
[e-Mail Spam](#)  
[ISA-Server](#)  
[Server Software](#)  
[Windows Security](#)

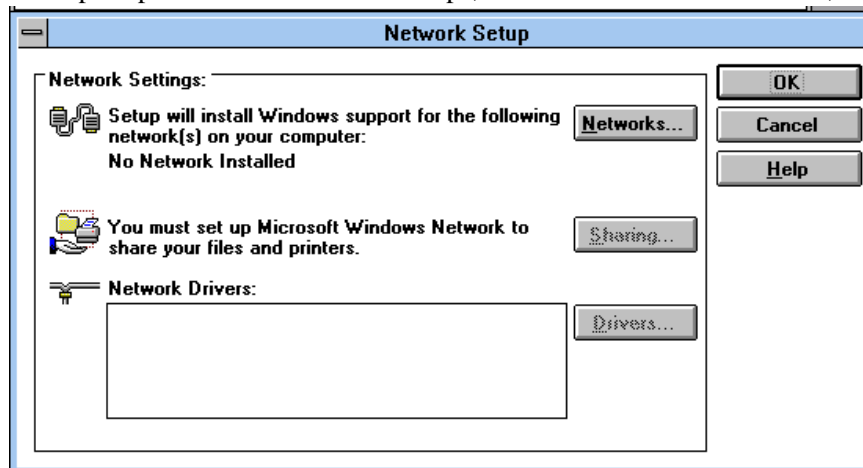
### Featured Product

### Network Addons

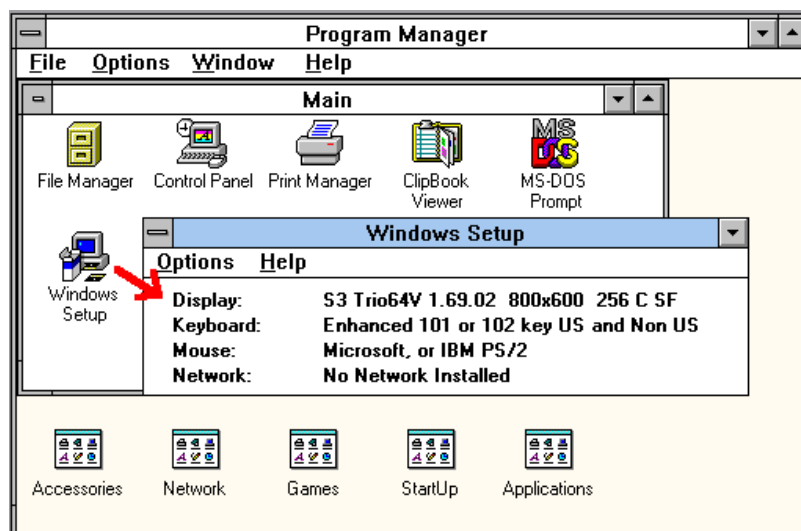
[Direct Cable](#)  
[- Serial / Parallel](#)  
[- Infrared](#)  
[- USB](#)  
[- High Speed Cables](#)  
[- WLAN - Wireless](#)  
[- Jokes \( computer \)](#)  
[- Download Site](#)

## WfW 3.11 Network Configuration

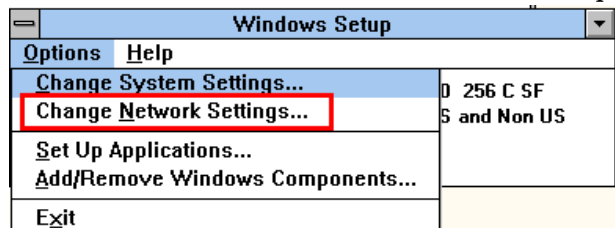
Like with any other Operating-System installation, I installed *WfW 3.11* **WITHOUT** any Network support, so when prompted for the "Network Setup", I deleted/un-selected all items, so it looks like below:



Then I configure/test it and as **LAST step** add Network support.

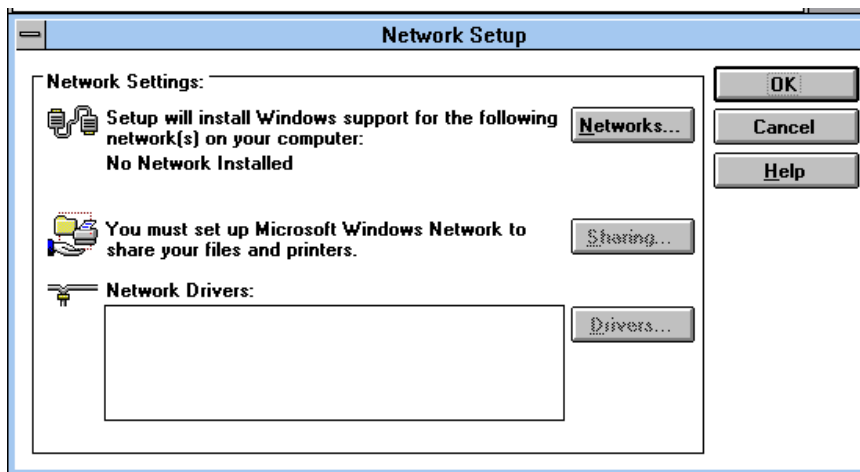


To install now a Network, select in "Windows Setup" the menu: "Options":

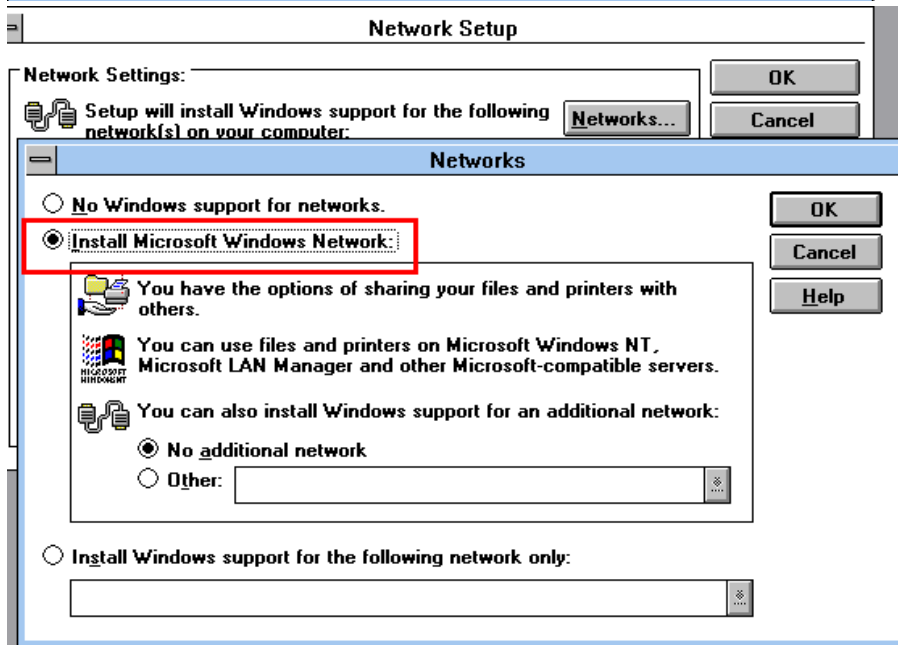


It displayed the "empty" Network Setup:

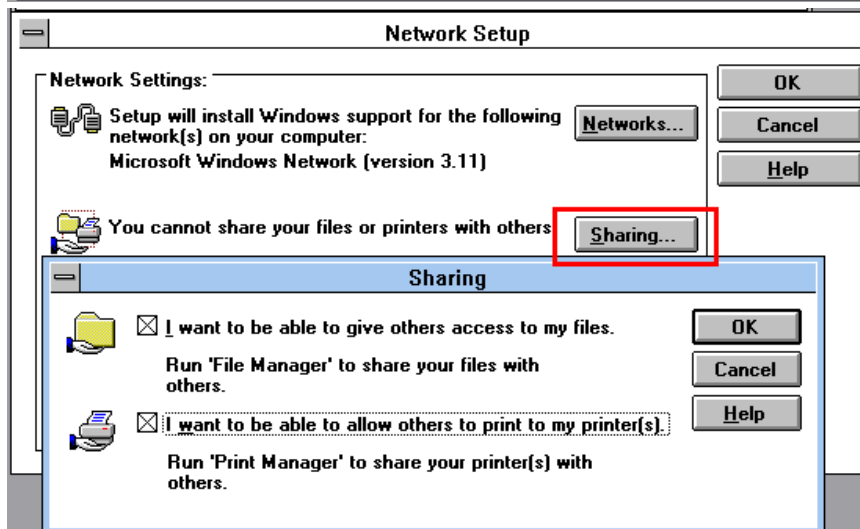
First, you must select the button [Networks](#).



**Networks:**  
Select to install "Microsoft Windows Network"

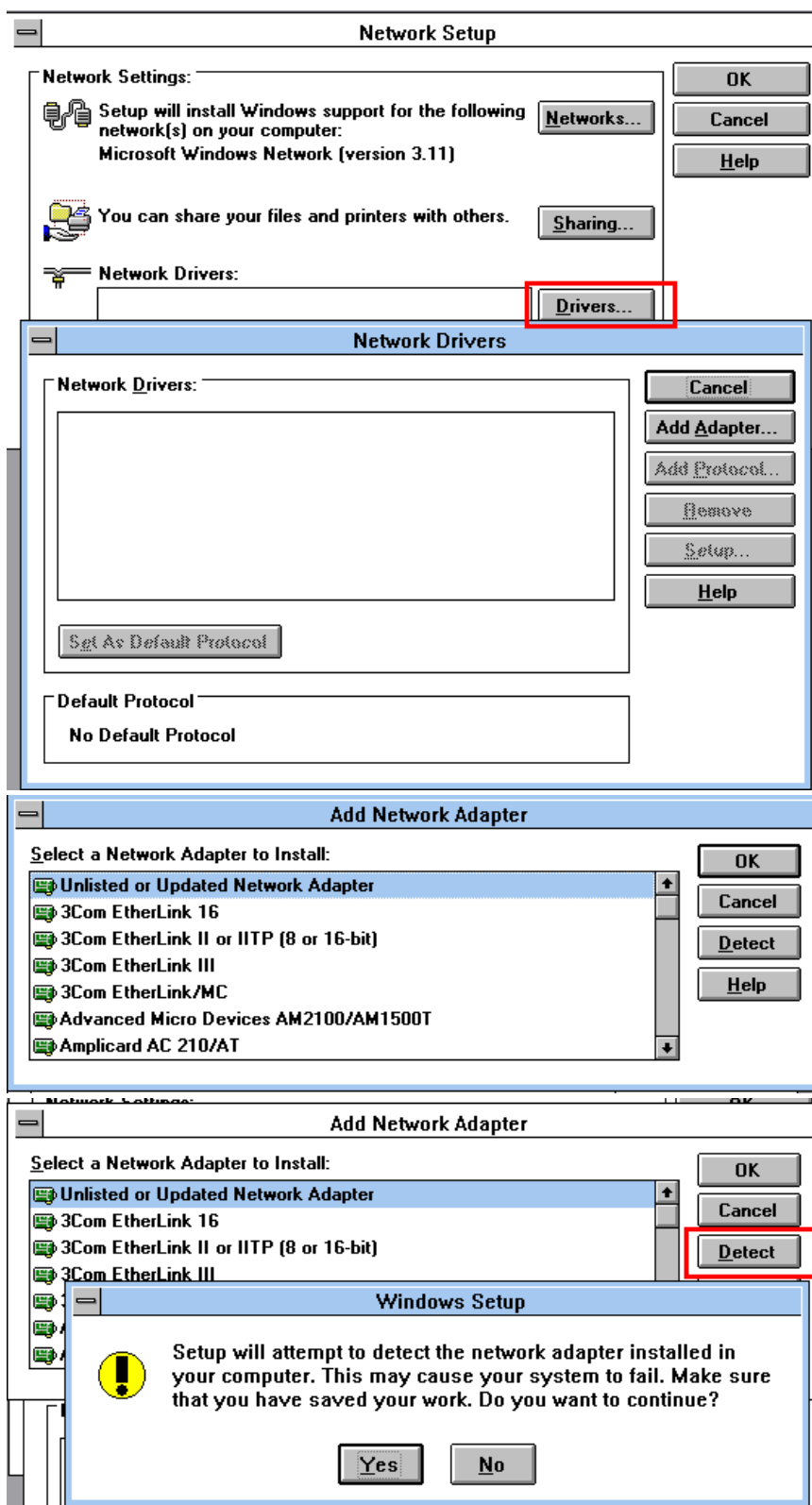


Now, you can select in "Network Setup" the button "Sharing".



Define, whether you like to allow other systems to access your disk-files and/or to use your printer.

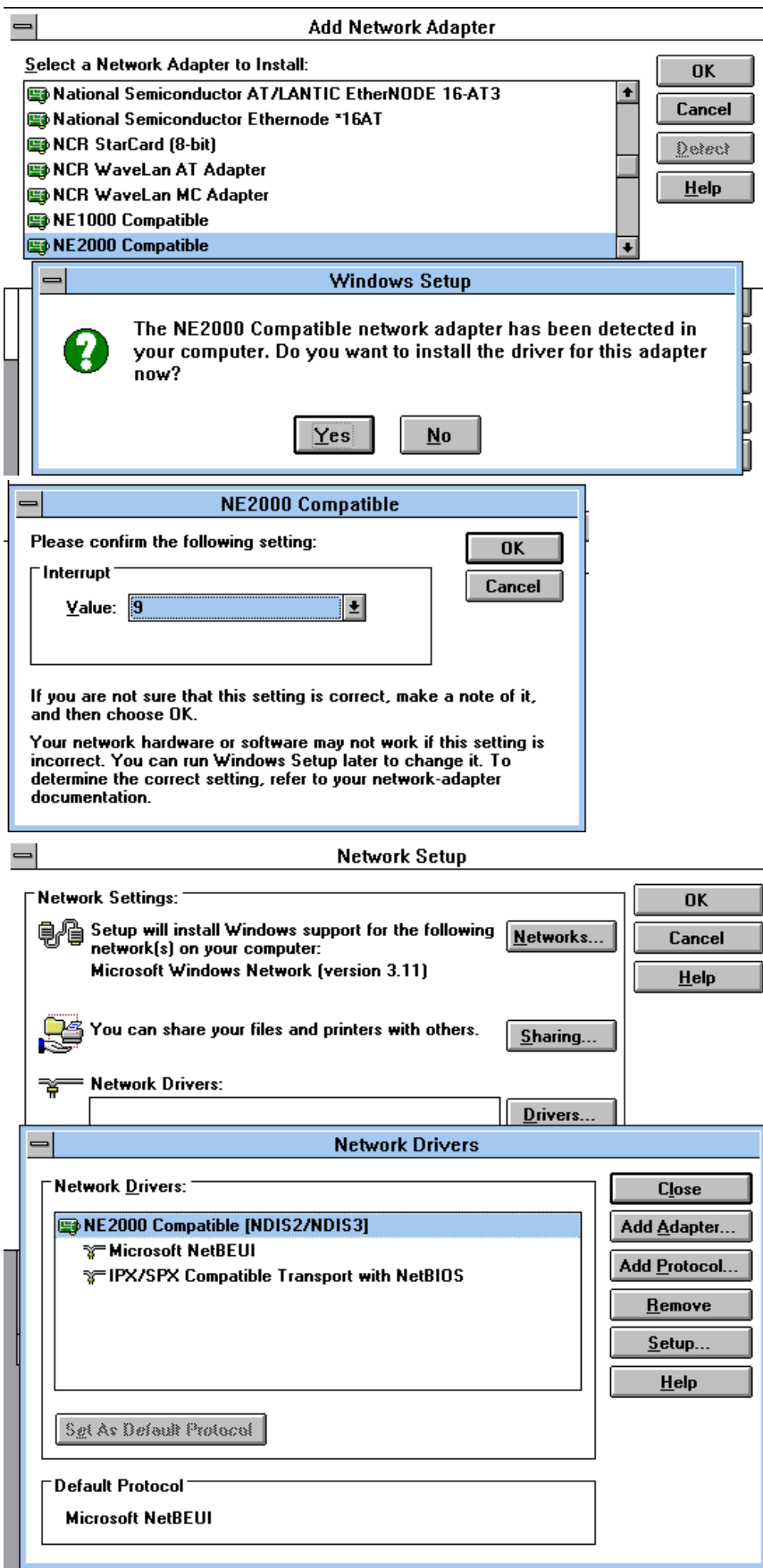
Now, we configure the Network drivers, where we first need to select the button: "[Add Adapter](#)" to select the type of installed Network Board (NIC).



**Adapter Selection:**  
Either select it from the list or try to let Setup to [Detect](#) it.

**Adapter Detection:**

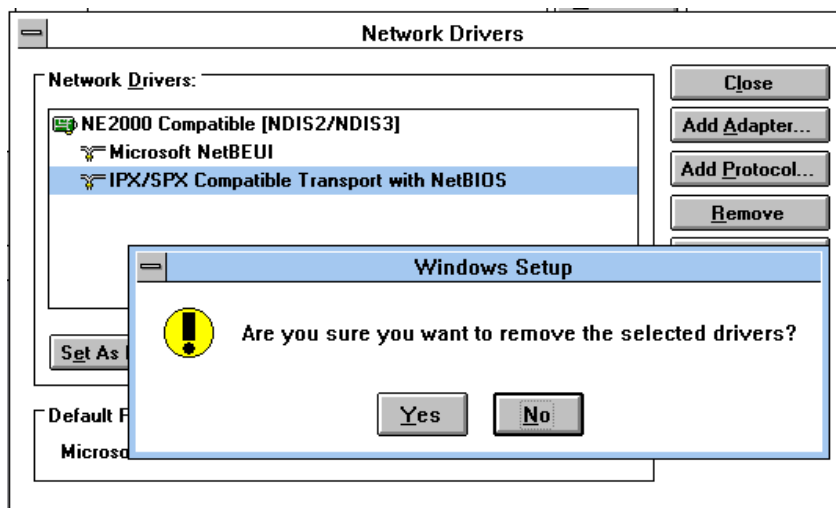
It found my NIC  
(an NE2000).



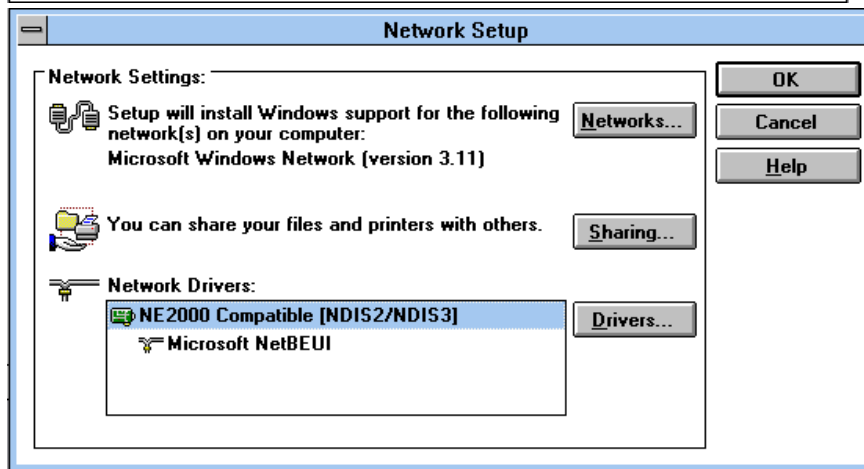
I need to confirm/  
configure the IRQ/  
Interrupt to be used.

Like on Windows95,  
Setup installs both  
"NetBEUI" and  
"IPX/SPX"  
protocols.

On a simple

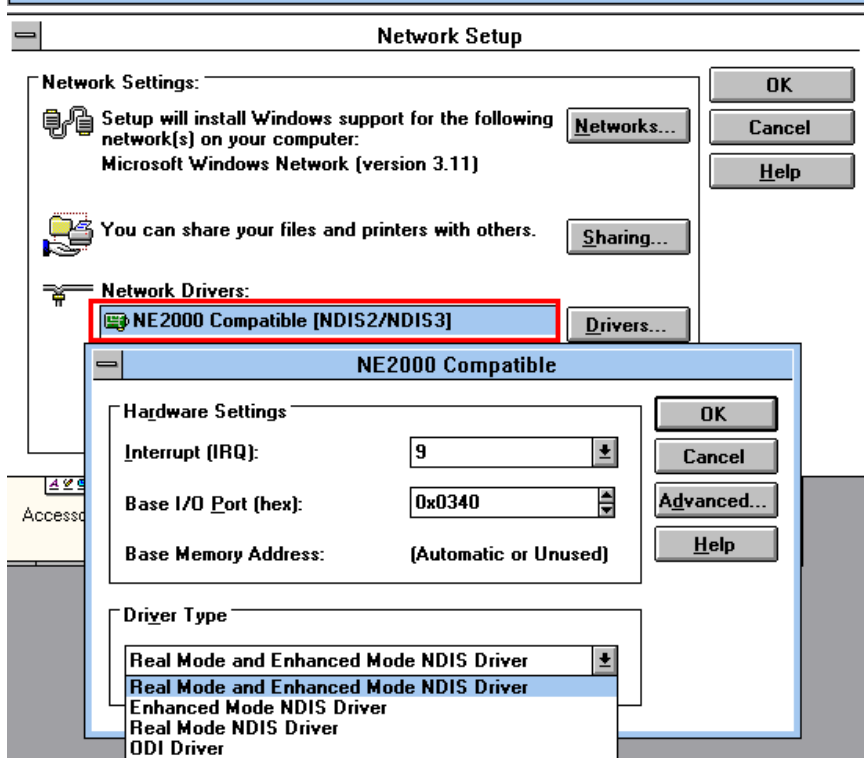


PC-to-PC Network with just Microsoft Windows systems, I use ONLY the "NetBEUI", so I delete "IPX/SPX"

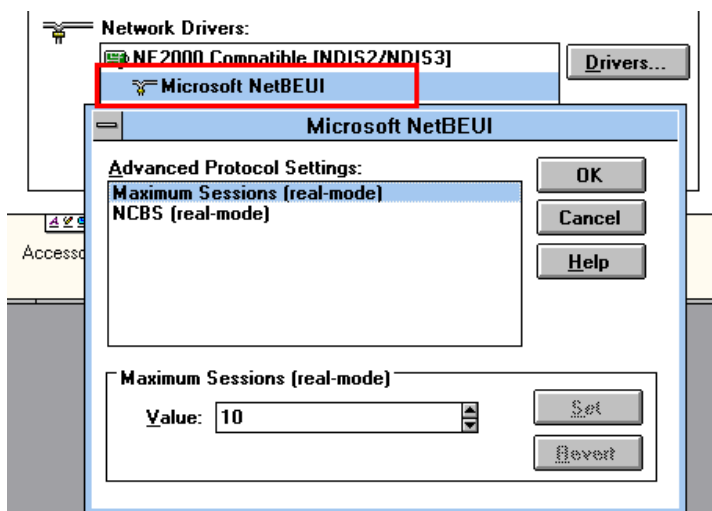


We are done with the selection.

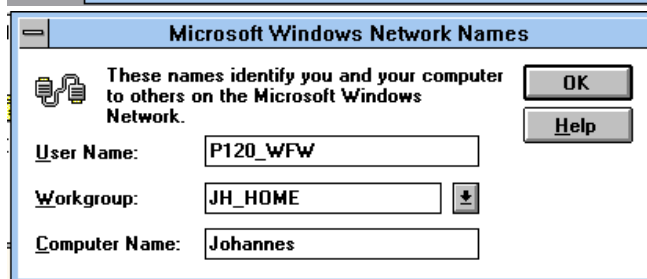
To verify the details of a driver, Double-Click on it.



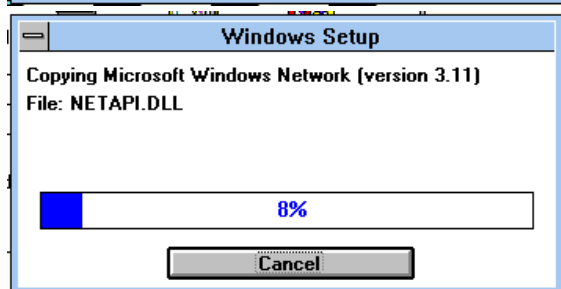
Properties of the Network board.



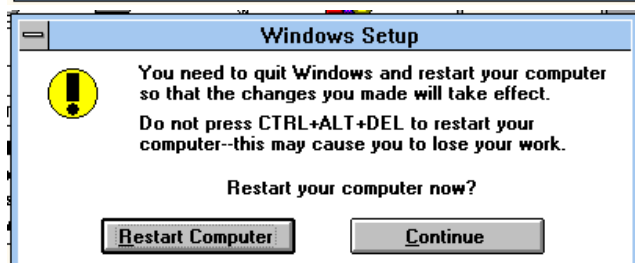
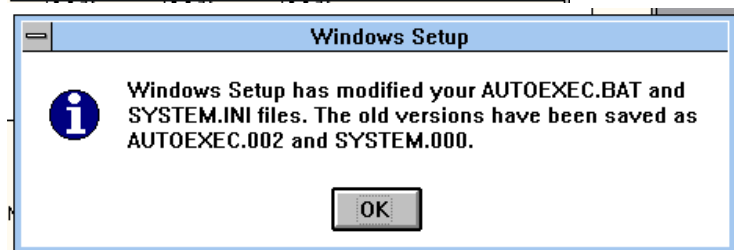
Properties of the *NetBEUI* protocol



We need to define names for:  
 - Workgroup  
 - Username  
 - Computername



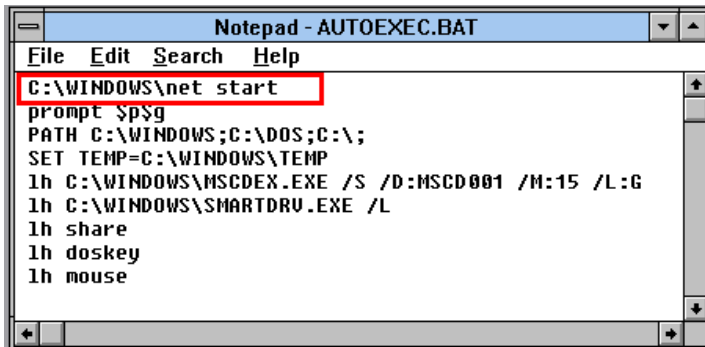
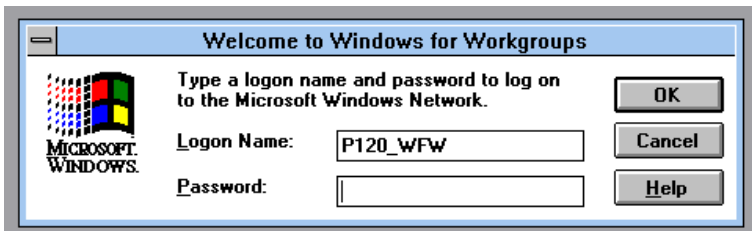
Make sure, that you have your WfW3.11 floppies or CD-ROM ready.



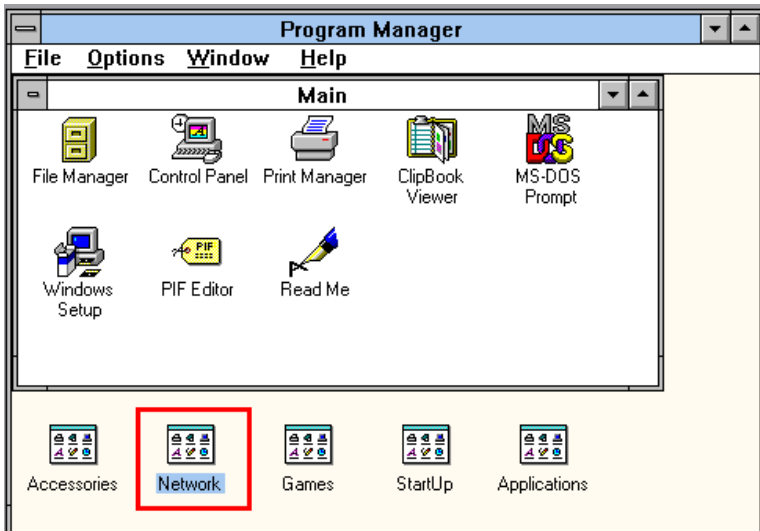
Since Setup made a modification to *AUTOEXEC.BAT* and *CONFIG.SYS*, YOU MUST REBOOT !

On rebooting and starting up Windows:

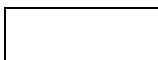
Now, you need to Login with a User-name (and an optional Password)



Just checking:  
The Network Setup has  
added the line:  
"NET START"  
to *AUTOEXEC.BAT*



A new Program Group  
*"Network"* has been  
installed



[WfW 3.11 Sharing and Mapping](#)